

# SEASONAL COLOUR ANALYSIS

SANA GROVER'S CHEAT SHEET

COOL

WINTER

DARK HAIR  
VIBRANT EYES  
HIGH CONTRAST  
BETWEEN SKIN, EYES,  
AND HAIR



COOL

SUMMER

LIGHTER HAIR AND EYE  
COLOUR  
CONTRAST IS LESSER  
BETWEEN THEIR SKIN AND  
THEIR HAIR COLOUR THAN  
THE WINTER SEASON



WARM

AUTUMN

DARK HAIR AND DARK  
EYES  
THEY DO NOT HAVE A LOT  
OF CONTRAST BETWEEN  
THEIR SKIN, EYES, AND  
HAIR  
A SOFT BLEND BETWEEN  
ALL THREE FEATURES



WARM

SPRING

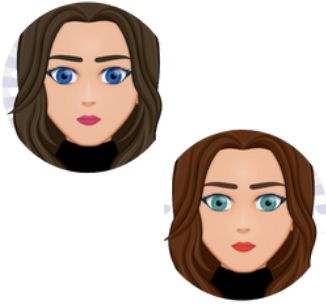
LIGHTER HAIR AND DARK  
EYES  
NOT A LOT OF CONTRAST  
IN THE THREE FEATURES  
AND FEELS LIKE A BLEND  
INSTEAD OF A SHARP  
CONTRAST



# SEASONAL COLOUR ANALYSIS

## SANA GROVER'S CHEAT SHEET

### BRIGHT



High level of contrast between hair and skin.

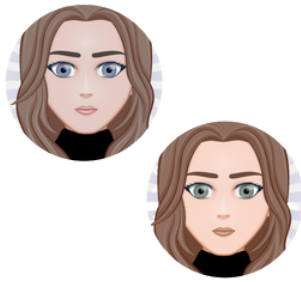
Skin is neutral, with blue-green veins.

Eyes are bright and taking prominence in the face.

CLEAR WINTER

CLEAR SPRING

### MUTED



Low contrast between hair and skin, often called nondescript.

Skin is somewhat light, with a grayed appearance.

Eyes are soft shades of brown.

SOFT SUMMER

SOFT AUTUMN

### LIGHT



Skin and hair are very light for ethnicity, very low contrast.

Hair will usually be light to medium.

Eyes are light blue or green.

LIGHT SUMMER

LIGHT SPRING

### DARK



Skin and hair are very dark for ethnicity, very low contrast. Hair is dark brown to blue-black.

Eyes are dark brown/deep grey.

DEEP WINTER

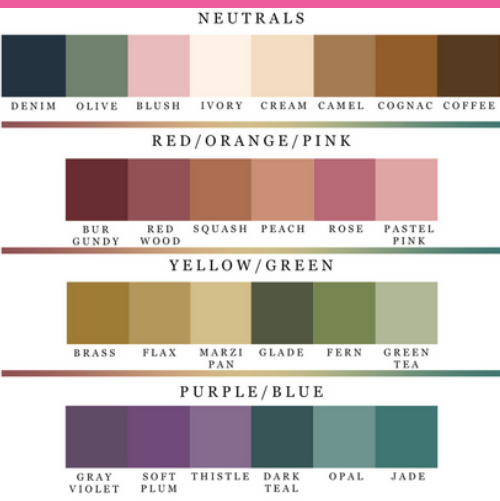
DEEP AUTUMN

# SEASONAL COLOUR ANALYSIS

## SANA GROVER'S CHEAT SHEET

### AUTUMN ROUNDUP

#### SOFT



#### TRUE/WARM



#### DEEP



### WINTER ROUNDUP

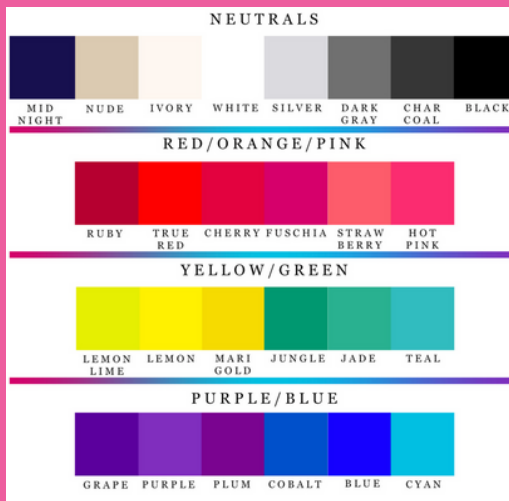
#### DEEP



#### TRUE/COOL



#### BRIGHT/CLEAR



# SEASONAL COLOUR ANALYSIS

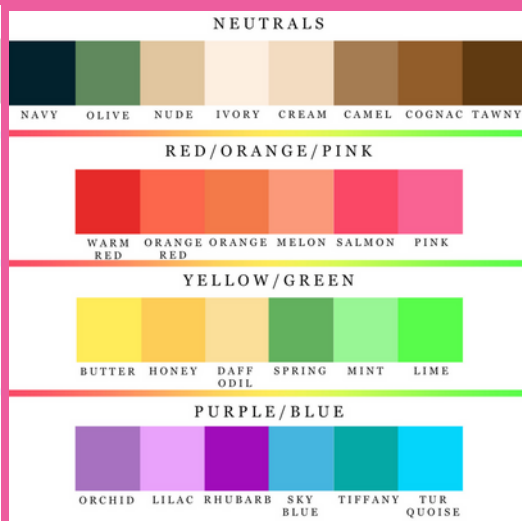
SANA GROVER'S CHEAT SHEET

## SPRING ROUNDUP

BRIGHT

TRUE/WARM

LIGHT



## SUMMER ROUNDUP

LIGHT

TRUE/COOL

SOFT

